



28.5V GPU Lite 70

The GPU Lite 70 is a device developed by **ENERCRAFT** to allow energy supply for a long time, mainly for aircraft maintenance or operational purposes, working as a continuous service power source. The equipment must be plugged in (AC cable) to a properly grounded outlet, and connected to the aircraft through the external DC power connector.



All of the **ENERCRAFT** GPUs Lite are equipped with Switching Power Supplies, which feature higher efficiencies, lighter weight, longer hold up times, and the ability to handle wider input voltage ranges.

SPECIFICATIONS	GPU Lite 70
AC INPUT	Single Phase 90-264 Vac, Freq. 47/63 Hz
DC OUTPUT	28.5 ± 0.5 Volts 70 Amp Nominal, 80 Amp Maximum
TEMPERATURE RANGE	- 20° C ↔ 60° C
DIMENSIONS	401 mm x 307 mm x 173 mm
WEIGHT	9 kg (including cable and AN2551)
CABLE	1.5 mts Standard 3 PINS NATO AN2551 (35mm ²)
PROTECTION	Electronic sensors & Fuses
COOLING	Cooling air system integrated into the equipment

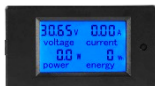
MAIN FEATURES

1 Incorporates the latest technology



ENERCRAFT patented design
The most innovative GPU
Compact and portable
The most reliable components

2 Full data display



Voltage
Output current

3 Protective Case



Reliable waterproofing
NANUK®'s patented latching system
Robust and Impact resistant
Modern design

4 Portable equipment



Lightweight unit
One-handed operation
Spring loaded handle
Reinforced metal padlock holes

The GPU Lite Family has been fully developed and tested by **ENERCRAFT**, to offer the latest technology in energy management and supply.

NORTH AMERICA & THE CARIBBEAN
CONTACT:



AERO SUPPORT GROUP
honest dedicated service you can trust

clientcare@asgltd.ca

www.asgltd.ca



January 2022
ENERCRAFT